

LICENSE SERVER SETUP FOR SUPERPRO NET KEYS



WHO SHOULD READ THIS DOCUMENT

PLEASE NOTE, THAT YOU ONLY NEED TO READ THIS DOCUMENT IF:

- 1) YOU HAVE RECEIVED ONE OR MORE FLOATING LICENSE KEYS, AND *YOU* ARE THE PERSON IN CHARGE OF INSTALLING THE LICENSEKEY PROGRAM FOR THE ENTIRE SYSTEM. - OR:
 - 2) YOU NEED TO INSTALL A *FLOATING* KEY FOR USE ON YOUR OWN PC.
-

To make it possible for **Automation** to run with a floating license key, it is necessary to install a *license server program* on the PC in the network, which you set up to function as the license server for **Automation**.

This document explains how to setup the license server on the following 32/64 bit operating systems: Windows 2000/XP/2003/Vista/2008.

LICENSE SERVER SETUP



Do NOT MOUNT USB KEY(S) YET

USB KEYS MUST *NOT* BE MOUNTED BEFORE THE INSTALLATION. IF YOU DO SO, WINDOWS MIGHT TRY TO FIND A DRIVER BY ITSELF.

When you wish to install the License server program on a PC — using one of the above mentioned Windows operating systems — do this:

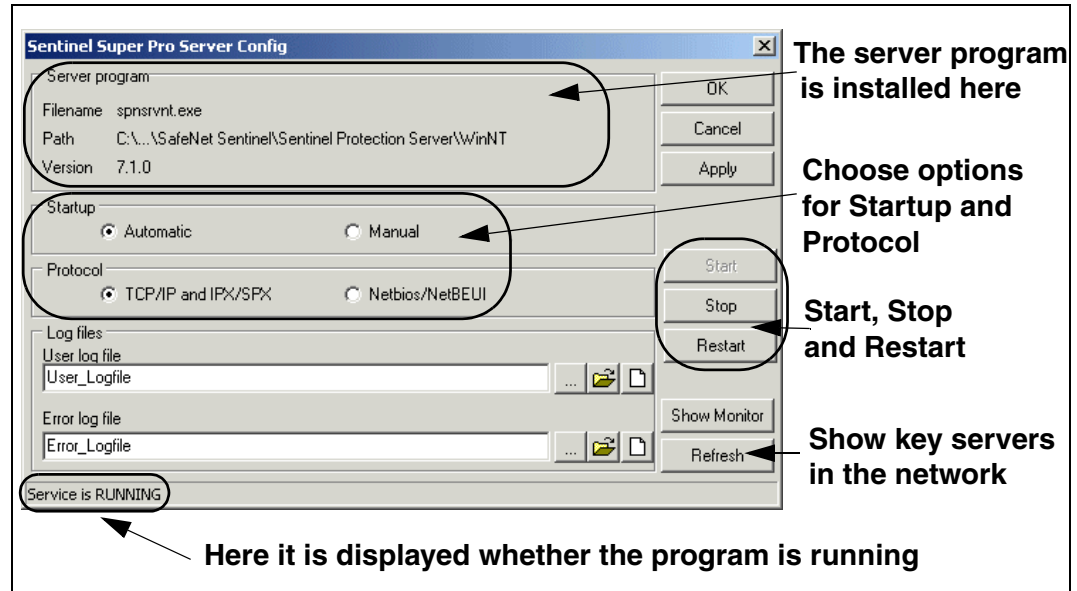
- 1) For license keys to the *printer port*: Turn off the PC, mount the license key, and restart.
- 2) Terminate all active programs on the PC.
- 3) Insert the **Automation** CD into the CD drive on the license server PC.
- 4) When the installation menu is displayed: Click on **Utility programs and drivers**.
- 5) Then click on **Install SuperPro Netlicense Server Programs**.
- 6) Follow the self-explanatory installation guide on screen.
- 7) For *USB keys*: Insert the USB key(s) when the installation is complete.
- 8) If you are asked to restart the PC, answer **Yes** to this.

The license server program is now installed on the PC.

CONTROLLING HOW THE LICENSE SERVER PROGRAM RUNS

If you subsequently wish to find out how the license program runs, click the **Start** button in the lower-left corner of the screen, and choose **Programs => PC schematic => SuperPro => SuperPro Config**.

The following dialog box is displayed:



In this dialog box you can see whether the service / the program is running, and you have the option of stopping or restarting the service.

Log files

To create a log file, do this:

- 1) Type in a file name in the field **User log file**. If you do not specify a path in front of the file name, the file is created in the folder specified in the upper part of the dialog box.
- 2) Click **Apply** in the upper-right corner of the dialog box.



WHAT IS INCLUDED IN THE LOG FILE

IN THE LOG FILE IT IS REGISTERED EACH TIME A LICENSE IS ASSIGNED, RELEASED, HAS A TIME-OUT, OR WHEN AN ERROR OCCURS IN THE COMMUNICATION BETWEEN THE SERVER AND THE CLIENT.

BECAUSE THE LOGFILES QUICKLY BECOME QUITE LARGE, IT IS RECOMMENDED ONLY TO USE LOGFILES WHEN THERE IS A SPECIFIC REASON TO DO SO. IT IS ALSO RECOMMENDED TO DELETE THE LOGFILES AT REGULAR INTEVALS.

Select a log file



If you click on the **Select User logfile** button, you enter a browser, from which you can select an existing logfile.

Open the existing logfile



If you click on the **Open User Logfile** button, the existing logfile is opened in the **Notepad** program. If no logfile has been created, you are asked whether to create one: Click **Yes** to create a logfile.

Clear the logfile



If you click on the **Clear User Logfile** button, the logfile is cleared.

Log file for errors

Correspondingly, you can create a log file for errors by typing in the name of a file in the field **Error log file** — see the figure above.

Show license servers in the network

If you click on **Show Monitor** in the right-hand side of the dialog box, you can get a survey of where there are free licenses, and which licenses have been tanked out.

If you are working on a PC which is being used as a license server — and a logfile has been created for this license server — you can furthermore see who has tanked licenses from the server.

— See e.g. the chapter “SuperPro Monitor” in the **Automation** manual.