



INSTALLATION

Here you get information about:

- General info on installation and the license system(p. 7)
- Installation of Automation
 - Normal installation(p. 7)
 - Shared installation..... (p. 8)
- Install or update?(p. 13)

HOW TO INSTALL THE PROGRAM

ABOUT INSTALLING AUTOMATION AND THE LICENSE SYSTEM

The **Automation** program can be installed in two ways:

- 1) **Normal installation:** The program is installed locally on the PC.
- 2) **Shared installation:** The program is installed on a drive on the network, to which all **Automation** users have access. After this, the individual workstations are created.

Installation of the license system

In order to run **Automation** as more than just a demo program, the *license system* must also be installed.

*The license system is an **individual program**. It has **no impact on the license system** whether you make a normal or a shared installation of Automation!*

This is when the license system is installed:

- **Normal installation:** During the installation you specify whether you use a *Local/standard licensekey* or a *Floating licensekey*. (See below).
- **Shared installation:** Here the license system must be installed after **Automation** is installed. — See “How to install the licensekey system” on page 10.

INSTALL AUTOMATION — NORMAL INSTALLATION

- 1) Close all active programs on your PC.
- 2) Insert the **Automation** CD into the CD-drive. After a short while, the program start menu is displayed.
- 3) Below *Normal installation*: Click **Install** and follow the self-explanatory instructions, until the program is installed.



Click here for
Normal installation

- Get info on *update* on page 13

- 4) When **Automation** is installed: Insert the USB license key into the PC.
- 5) Start **Automation**. — If necessary, see “Start the program” on page 9.

INSTALL AUTOMATION — SHARED INSTALLATION

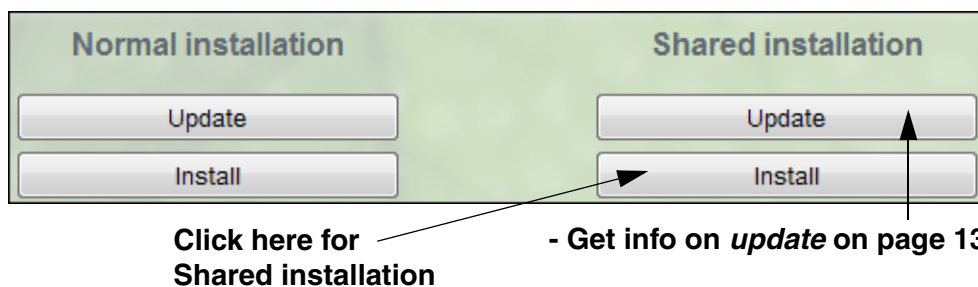
In a network, **Automation** can be shared by multiple users. The installation consists of four steps:

- 1) Install **Automation** on a shared folder on the server.
- 2) Create the individual workstations.
- 3) Install the license server system.
- 4) Activate the licensekey on each individual workstation.

1. Installation on the server PC

On the PC, which shall function as server, do this:

- 1) Close all active programs on the PC, which you have chosen to function as the server for the **Automation** program.
- 2) Insert the **Automation** CD into the CD-drive: After a short while, the program installation menu is displayed.
- 3) Below **Shared installation**: Click **Install** and follow the self-explanatory instructions, until the program is installed.



2. Installation on the individual workstations

Then do the following on each individual **Automation** workstation:

- 1) Open the Windows Explorer.
- 2) Open the **Pcscad** folder on the shared folder on the server, where the program is installed.
- 3) Double-click on the **setup.exe** file, and follow the instructions.

3. Installation of the license server system

— See “License server setup for SuperPro Net keys” on page 14.

4. Activate the licensekey on the individual workstations

On each individual workstation, you must now activate the floating license. — See “Activating the floating license key” on page 12.

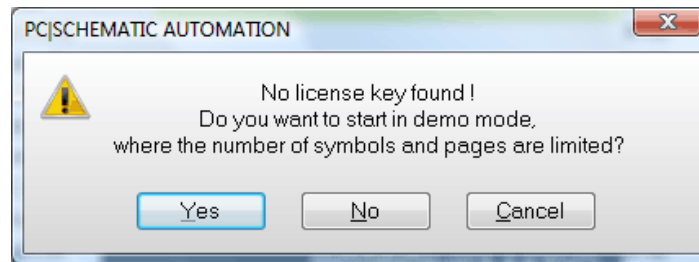
START THE PROGRAM

To start **Automation** you can choose **Start => Programs => PC|SCHEMATIC => PC|SCHEMATIC Automation**, and the program is started.

You can now start working with the program.

If you start in Demo mode

It can happen that you get the following message:



If this happens, it tells you that you:

- *Either* have not mounted the license key correctly.
- *Or* you have to change the license key setup for the program. — Read more about this in “How to install the licensekey system” on page 10.

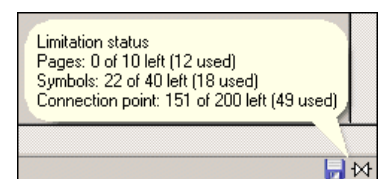
You can still start the program by clicking **Yes**, but it will be in demo mode only. When the program runs in demo mode, this will be displayed in the upper right-hand corner of the document window.

LIMITATIONS IN DEMO MODE
<p>IN THE DEMO MODE YOU ARE ONLY ALLOWED TO SAVE PROJECTS CONTAINING <i>LESS THAN 40 SYMBOLS AND LESS THAN 200 CONNECTION POINTS</i>. (AN UNLIMITED AMOUNT OF SYMBOLS WITHOUT CONNECTION POINTS CAN BE INCLUDED IN THE PROJECTS).</p> <p>YOU CAN OPEN ANY PROJECT TO SEE IT, PRINT ANY PROJECT, CREATE SYMBOLS AND DRAWING HEADERS, WORK WITH THE DATABASE AND PRACTICE ALL THE PROGRAM FACILITIES.</p> <p>PROJECTS CREATED IN THE DEMO MODE WILL ALWAYS REMAIN DEMO PROJECTS. PROJECTS CREATED IN THE DEMO MODE CANNOT BE ADDED TO PROJECTS CREATED IN NORMAL MODE.</p> <p>WHEN YOU MOUNT A LICENSE KEY ON YOUR PC, YOU WILL BE ABLE TO CONTINUE WORKING ON THE PROJECT AND TO SAVE USING MORE SYMBOLS. <i>BUT</i> IF THE PROJECT HAS BEEN STARTED AS A DEMO PROJECT, YOU WILL NOT BE ALLOWED TO MERGE IT WITH OTHER PROJECTS. (PLEASE CLOSE DOWN THE PC BEFORE MOUNTING THE LICENSE KEY).</p>



STATUS FOR AUTOMATION PROJECT LIMITATIONS

WHEN YOU USE THE **Automation FLEX** OR THE **Automation 40** VERSION — AND WHEN IN DEMO MODE —, AN EXTRA BUTTON IS DISPLAYED IN THE LOWER-RIGHT CORNER OF THE SCREEN. THIS BUTTON DISPLAYS THE LIMITATION STATUS FOR THE PROJECT.



HOW TO INSTALL THE LICENSEKEY SYSTEM



READ THIS CHAPTER IF YOU START IN THE DEMO MODE

THE ONLY REASON TO READ THIS CHAPTER, IS IF YOU ARE ONLY ALLOWED TO START IN THE DEMO MODE.

If you are only allowed to start in Demo mode, the applied type of license key determines what to do next. There are two options:

- 1) You can either have a **local/standard license key**, or
- 2) You can have a **floating license key**.

You can't tell by looking on a license key which type it is.



THE LICENSE SYSTEM IS AN INDEPENDENT SYSTEM

WHETHER THE **Automation** PROGRAM IS INSTALLED LOCALLY ON YOUR MACHINE, OR IT RUNS VIA THE NETWORK, HAS NO INFLUENCE IN THIS CONTEXT. THE LICENSE KEY SYSTEM IS A PROGRAM IN ITS OWN RIGHT, RUNNING INDEPENDENT OF **Automation**.

If you are not sure which type of license key you have, please contact your local support.

When you know which type of license key you have, do this:

- **Local/standard license key**: See "Installation of Local/standard license key" on page 11.
- **Floating license key**: See "Activating the floating license key" on page 12.

Installation of Local/standard license key

If you have a local/standard license key for your program, and physically have inserted the key into the USB port, it will typically not be necessary to take any further action.

If you have problems anyway, do as follows:



IMPORTANT FOR USB KEYS

DO NOT INSERT THE USB KEY BEFORE **Automation** AND THE **SENTINEL SYSTEM DRIVER** IS INSTALLED.

THE **SENTINEL SYSTEM DRIVER** IS INSTALLED DURING THE INSTALLATION OF **Automation**. (IF YOU ANSWERED **No** TO THIS, PLEASE READ “LICENSE SERVER SETUP FOR SUPERPRO NET KEYS” ON PAGE 14).

- 1) Check whether the license key is inserted correctly into the USB port.
- 3) Start **Automation**.
- 4) The **Settings** dialog box appears. Choose the tab **System**.
- 5) In the field below **License key**, **SuperPro Local** should already be selected. Is this not the case, click the down-arrow below **License key**, and select **SuperPro Local**. Click **OK**.
- 6) You now get a message telling you that the program should be restarted. Click **OK**, and click **OK** to leave **Settings**.
- 7) Terminate the program choosing **File => Exit**.

You are now ready to start **Automation**.

Are you still having problems, please contact your local support service.



STARTING IN DEMO MODE IS THE ONLY RISK

PLEASE NOTE THAT CHOOSING AN INCORRECT LICENSE KEY WILL NOT CAUSE ANY DAMAGE; THE ONLY RISK IS THAT YOU ARE ONLY ALLOWED TO START IN THE DEMO MODE.

Activating the floating license key

Are you working on a network with a floating license key in the **Automation** server PC, and you are only allowed to start in the demo mode, please do as follows:

- 1) Start **Automation**.
- 2) The **Settings** dialog box appears: Click on the **System** tab.
- 3) In the field below **License key** you click the down-arrow, and then select the network to which you are connected.
 - If you do not know to which type of network you are connected, you can choose **Super pro All nets** instead, which makes **Automation** examine which type of network you are connected to. This has the disadvantage that the program will use longer time starting, because it must examine which type of network you are working on, each time the program is started.
- 4) Choose a license key setting and click **OK**.
- 5) You are now told that the program must be restarted: Click **OK**.
- 6) Choose **File => Exit**.
- 7) Restart the program.

You are now ready to start **Automation**.

If you still experience difficulties, please contact your local support service.



INSTALLING THE FLOATING LICENSE KEY ON THE LICENSE SERVER PC

IF YOU HAVE RECEIVED A FLOATING LICENSE KEY WHICH YOU ARE RESPONSIBLE FOR INSTALLING ON THE PC, THAT SHALL FUNCTION AS LICENSE SERVER FOR **Automation**, PLEASE SEE "LICENSE SERVER SETUP FOR SUPERPRO NET KEYS" ON PAGE 14.

Local/standard license key: Subsequent installation of Sentinel System driver

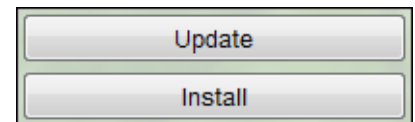
If you answered **No** to install **Sentinel system driver** during the installation, and you now wish to use a local/standard license key on your PC, you have to run an extra program:

- 1) Insert the **Automation** CD.
- 2) The **Automation** installation menu appears: Click on **Utility programs and drivers**.
- 3) Then click on **Install Sentinel System Driver**.
- 4) Click on **Exit** to leave the installation menu.
- 5) Restart your PC.

If your program still starts in the demo mode, please read “Installation of Local/standard license key” on page 11.

INSTALL OR UPDATE?

During the installation procedure, you can either choose to *install* or to *update*.



If you have NOT already installed Automation

If you have not already installed **Automation**, just click **Install**.

If you HAVE already installed Automation

If you already have installed **Automation**, click **Update**.

If you choose to *install* instead of updating, this happens:

- Your program settings are overwritten
- The symbols and projects, which came along with the previous installation of **Automation**, are overwritten
- The database, which came along with the previous installation of **Automation**, is overwritten

LICENSE SERVER SETUP FOR SUPERPRO NET KEYS



WHO SHOULD READ THIS DOCUMENT

PLEASE NOTE, THAT YOU ONLY NEED TO READ THIS DOCUMENT IF:

- 1) YOU HAVE RECEIVED ONE OR MORE FLOATING LICENSE KEYS, AND *YOU* ARE THE PERSON IN CHARGE OF INSTALLING THE LICENSEKEY PROGRAM FOR THE ENTIRE SYSTEM. - OR:
 - 2) YOU NEED TO INSTALL A *FLOATING* KEY FOR USE ON YOUR OWN PC.
-

To make it possible for **Automation** to run with a floating license key, it is necessary to install a *license server program* on the PC in the network, which you set up to function as the license server for **Automation**.

This document explains how to setup the license server on the following 32/64 bit operating systems: Windows 2000/XP/2003/Vista/2008.

LICENSE SERVER SETUP



Do NOT MOUNT USB KEY(S) YET

USB KEYS MUST *NOT* BE MOUNTED BEFORE THE INSTALLATION. IF YOU DO SO, WINDOWS MIGHT TRY TO FIND A DRIVER BY ITSELF.

When you wish to install the License server program on a PC — using one of the above mentioned Windows operating systems — do this:

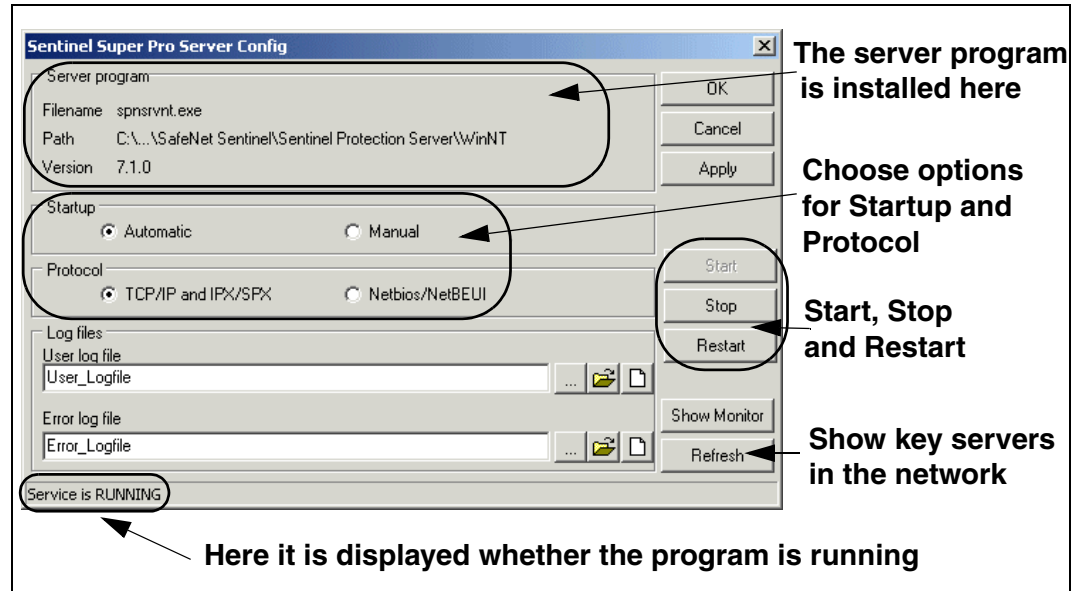
- 1) For license keys to the *printer port*: Turn off the PC, mount the license key, and restart.
- 2) Terminate all active programs on the PC.
- 3) Insert the **Automation** CD into the CD drive on the license server PC.
- 4) When the installation menu is displayed: Click on **Utility programs and drivers**.
- 5) Then click on **Install SuperPro Netlicense Server Programs**.
- 6) Follow the self-explanatory installation guide on screen.
- 7) For *USB keys*: Insert the USB key(s) when the installation is complete.
- 8) If you are asked to restart the PC, answer **Yes** to this.

The license server program is now installed on the PC.

CONTROLLING HOW THE LICENSE SERVER PROGRAM RUNS

If you subsequently wish to find out how the license program runs, click the **Start** button in the lower-left corner of the screen, and choose **Programs => PC schematic => SuperPro => SuperPro Config**.

The following dialog box is displayed:



In this dialog box you can see whether the service / the program is running, and you have the option of stopping or restarting the service.

Log files

To create a log file, do this:

- 1) Type in a file name in the field **User log file**. If you do not specify a path in front of the file name, the file is created in the folder specified in the upper part of the dialog box.
- 2) Click **Apply** in the upper-right corner of the dialog box.



WHAT IS INCLUDED IN THE LOG FILE

IN THE LOG FILE IT IS REGISTERED EACH TIME A LICENSE IS ASSIGNED, RELEASED, HAS A TIME-OUT, OR WHEN AN ERROR OCCURS IN THE COMMUNICATION BETWEEN THE SERVER AND THE CLIENT.

BECAUSE THE LOGFILES QUICKLY BECOME QUITE LARGE, IT IS RECOMMENDED ONLY TO USE LOGFILES WHEN THERE IS A SPECIFIC REASON TO DO SO. IT IS ALSO RECOMMENDED TO DELETE THE LOGFILES AT REGULAR INTEVALS.

Select a log file



If you click on the **Select User log file** button, you enter a browser, from which you can select an existing logfile.

Open the existing logfile



If you click on the **Open User Logfile** button, the existing logfile is opened in the **Notepad** program. If no logfile has been created, you are asked whether to create one: Click **Yes** to create a logfile.

Clear the logfile



If you click on the **Clear User Logfile** button, the logfile is cleared.

Log file for errors

Correspondingly, you can create a log file for errors by typing in the name of a file in the field **Error log file** — see the figure above.

Show license servers in the network

If you click on **Show Monitor** in the right-hand side of the dialog box, you can get a survey of where there are free licenses, and which licenses have been tanked out.

If you are working on a PC which is being used as a license server — and a logfile has been created for this license server — you can furthermore see who has tanked licenses from the server.

— See e.g. the chapter “SuperPro Monitor” in the **Automation** manual.